
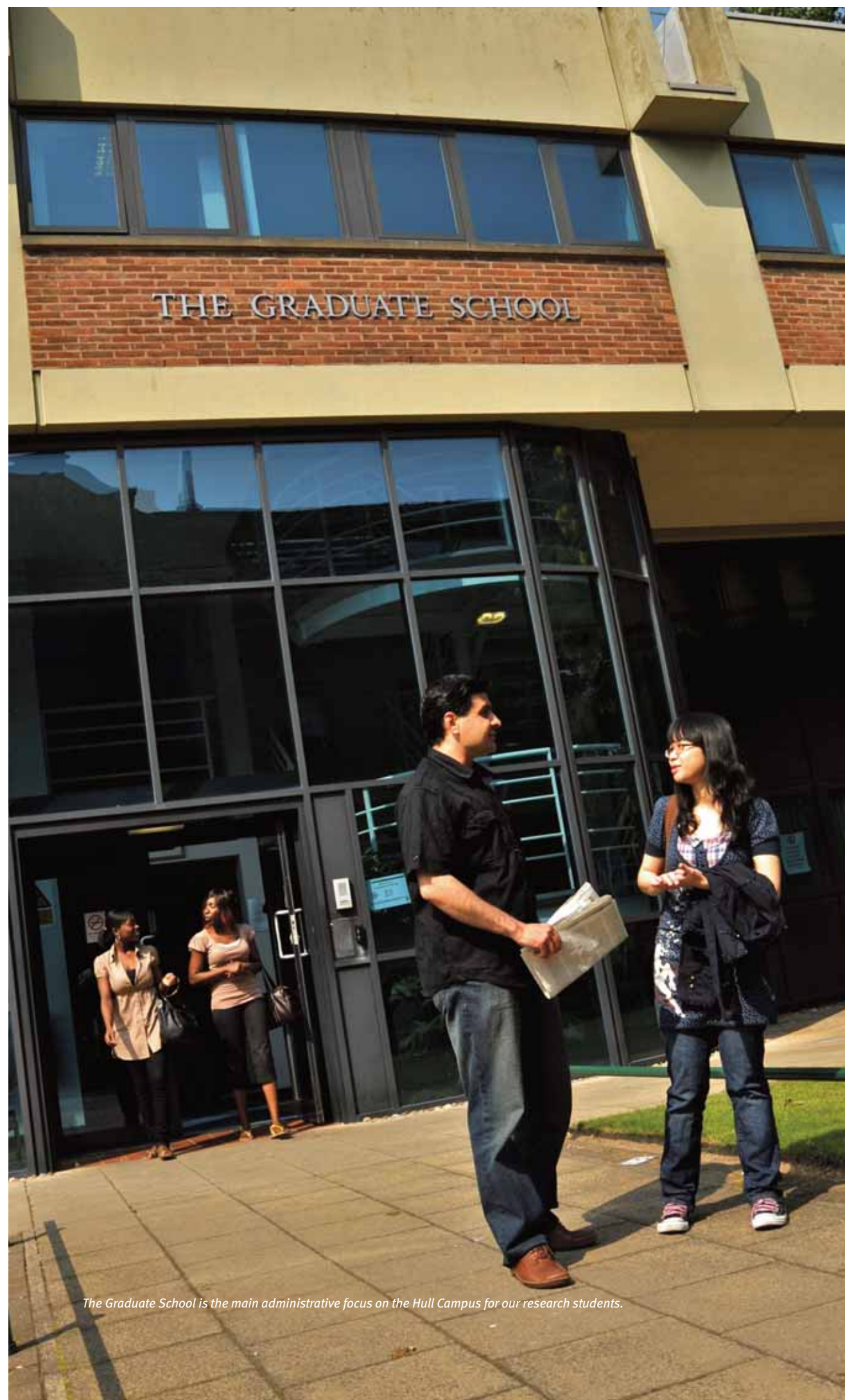


# Postgraduate study guide



Why choose Hull?   2
Spotlight on research   4
Research at the Scarborough Campus   6
Campuses   8
Region   10
Study facilities and support   12
Accommodation   16
Postgraduate opportunities   18
Research training and supervision   19
Introduction to the faculties   20
International students   28
Fees and costs   30
Admissions   32
Masters Foundation programme   34
Index of taught postgraduate programmes   37
Fact file   40



*The Graduate School is the main administrative focus on the Hull Campus for our research students.*

## Why choose Hull?



*The Oscar-winning film director Anthony Minghella was a graduate of the University's Drama Department.*

**A research-active university, Hull has a distinguished reputation for providing an outstanding education and a rich social experience for its students. Our academic staff possess an enviable range of expertise and enjoy international acclaim in many disciplines.**

### **A cosmopolitan university**

We offer a wide range of taught higher degrees and many opportunities for research at Masters and PhD levels. More than 2,300 postgraduate students come from some 50 countries worldwide, and our overseas students are supported by a dedicated International Office. The University's campuses at Hull and Scarborough are cosmopolitan locations in which to live and study.

### **Research of international significance**

In the recent national Research Assessment Exercise, 80% of the University's research was judged to be of international standard in terms of originality, significance and rigour. The areas of allied health professions and studies and history received especially high scores, while Hull's other established areas of strength – such as English, politics, law and geography – all maintained their position. There were improvements in psychology, education, business, and social work and social policy.

### **Collaboration across disciplines**

We have established research institutes to stimulate cross-disciplinary research working. Not surprisingly, the University is an important centre for maritime and environmental studies, but we are also strongly involved in areas such as Renaissance studies, urban and regional studies, legislative studies, applied ethics and computer-interactive imaging. We are committed to establishing productive relationships with research groups from external organisations and industry. Our students benefit from Hull's expertise in applied research that increases employability – through initiatives such as the Centre of Industrial Collaboration in Environmental Technologies and the Centre for Adaptive Science.

### **Exceptional student support**

The University prides itself on its support of students. Whether you study for a higher degree by research or take a taught programme, you will be personally supervised by staff who are experts in their fields. The Graduate School is a one-stop shop for research students and coordinates our accredited Postgraduate Research Training Scheme. Student Support Services offers a range of help and advice on issues such as accommodation, finance, careers and faith.

### **A great environment for students**

Many of our students live within walking distance of our campuses, with shops and amenities close at hand. Both centres have a rich cultural scene and offer plenty of opportunities for entertainment and relaxation, with spectacular countryside and the sea within easy reach.

### **Find out more**

If you choose the University of Hull, you will experience our unique blend of world-class research expertise, solid support, state-of-the-art facilities and great places to live. Check out the University's website at [www.hull.ac.uk](http://www.hull.ac.uk) for further details of our departments and student life at the University, or come and visit us and talk to current postgraduates and academic staff.





*Christine Loh, a Hull Law graduate, is a leading political voice and was named Hong Kong Business magazine's Woman of the Year in 2006.*

The University of Hull has a distinguished tradition of innovative and internationally recognised research, from the production of the first viable liquid-crystal technology to the development of a revolutionary bone density scanner for detecting osteoporosis. Both of these breakthroughs recently figured in *Eureka UK's* list of '100 discoveries and developments in UK universities that have changed the world'.

Maintaining this level of research excellence is a strategic priority for the University, and various significant developments are currently taking place to consolidate our worldwide academic reputation.

#### Innovations that change lives

We are continually enhancing our reputation for life-changing research. One of our highest-profile developments, the Wilberforce Institute of Slavery and Emancipation, is an interdisciplinary centre dedicated to promoting change in the areas of social justice and human rights.

VERT (Virtual Environment Radiotherapy Training), a pioneering project by our Department of Computer Science, enables trainee radiographers to practise their skills in a virtual replica of a radiation therapy room. Endorsed by the Prime Minister, the system is being installed in every hospital radiography unit around the country. VERT received the prestigious BT Flagship Innovation Award.

The Computer Science Department has also developed software to aid firefighters by providing vital information while they are actually en route to a blaze. The system transmits maps of the immediate area, blueprints of buildings and alerts of potential risks – such as nearby schools, factories or chemical hazards – to firefighters' pocket computers, allowing them to plan how best to tackle a situation before they have even arrived at the scene.

#### Research with real-world uses

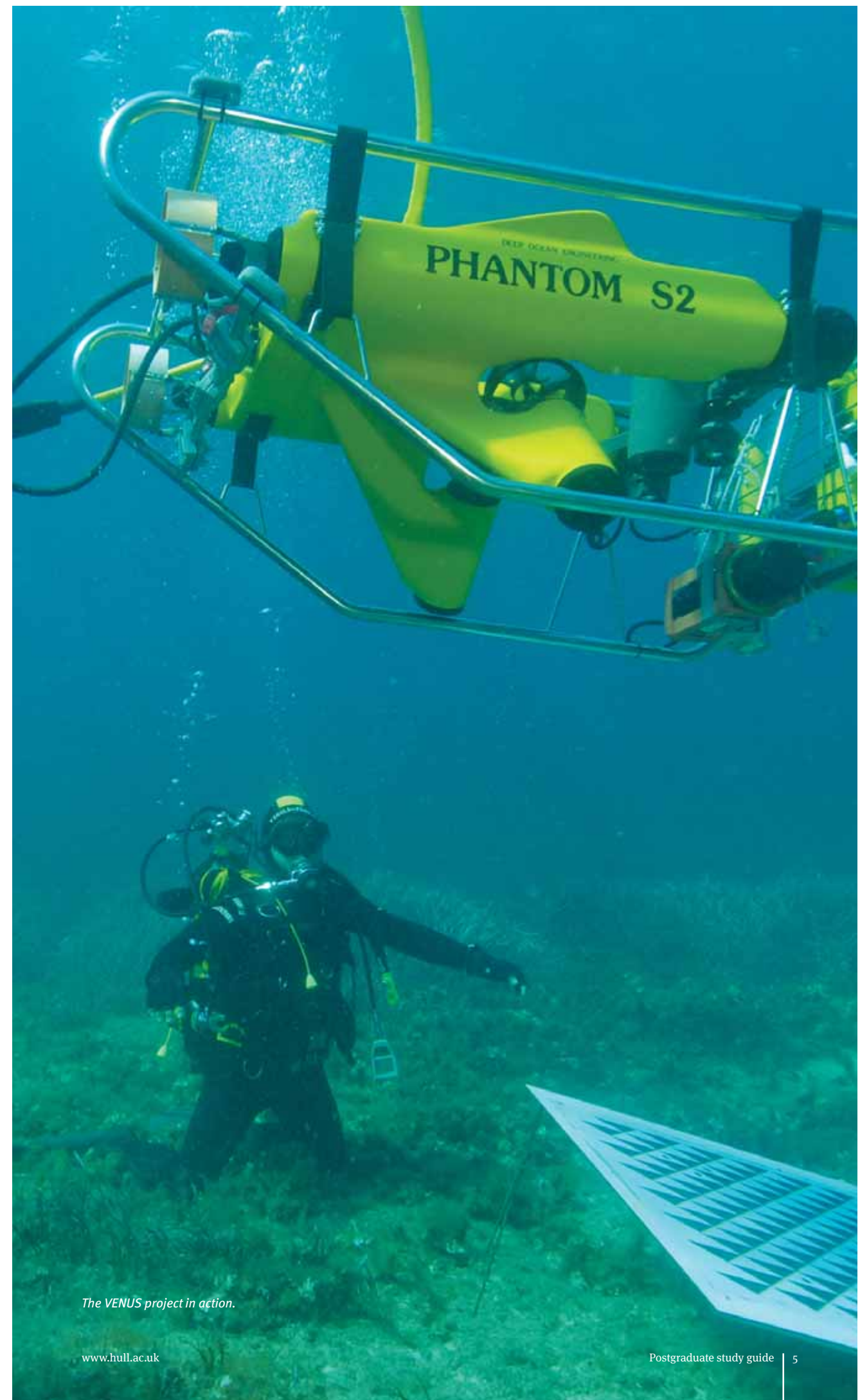
Another notable recent addition is our £9 million Logistics Institute, the only dedicated facility of its kind in northern England. The institute helps organisations to increase efficiency in the production, supply and transportation of their goods and services.

As part of the EU-funded VENUS (Virtual Exploration of Underwater Sites) project, the Computer Science Department developed a 3D simulator allowing virtual exploration of the sea bed. The only simulator of its kind worldwide, VENUS is being used to map the ocean floor and generate 3D archaeological records of shipwreck sites before they are eroded. The project showcases digital preservation and demonstrates new exploration facilities in a safe, cost-effective environment.

Our Department of Geography's research into sustainable development influences government policy makers, while Dr Mike Fagan, of our Centre for Medical Engineering and Technology, won a Royal Society Industry Fellowship to collaborate with the global medical technology business Smith & Nephew on improving hip and knee replacement techniques.

#### Expanding capabilities

In continuing to enhance our multidisciplinary research, the University has established three research institutes for the study of ethics, environment and clinical biosciences. We also have nine academic fellowships awarded by the UK Research Councils – three in history; two in geography; and one each in biological nuclear magnetic resonance, law, logistics and chemistry.



*The VENUS project in action.*

### Research at the Scarborough Campus

Taught and research postgraduate opportunities are available at the Scarborough Campus. With education, business, arts and science departments all concentrated on this campus, programmes that research within disciplines and those that cross traditional disciplinary boundaries can easily be facilitated.

#### The School of Arts and New Media (SANM)

combines expertise from Digital Arts, English, Internet Computing, Music Technology, and Theatre and Performance. Research is a core activity of the school, as is the supervision of postgraduate research students. In addition to subject-based research, the SANM also engages in practice-as-research, collaboration and science-arts intersections, and significant amounts of reach-out and knowledge transfer. Research clusters include

- Digital Media Computing Research (DMCR)
- Music Technology (including Scarborough Electroacoustics – SEA)
- Theatre and Contemporary Practice (TCP)

[www.hull.ac.uk/sanm](http://www.hull.ac.uk/sanm)

#### The Scarborough Centre for Educational Research (SCER)

includes staff with an array of research interests in education, most recently with particularly strong projects focusing on early-years education, e-learning and educational policy. The SCER also holds regular Scarborough Educational Forum meetings, at which internal researchers present and discuss their recent work with other colleagues from the department and across campus, while notable external researchers present cutting-edge knowledge to University and community educators and students.

[www.hull.ac.uk/scer](http://www.hull.ac.uk/scer)

#### The Centre for Environmental and Marine Sciences (CEMS)

is a specialist unit with particular interests in field-based environmental and marine research. MSc-by-research and PhD topics available include environmental chemistry, ecomorphology, moorland ecology, intertidal ecology, fisheries management and animal behaviour. Most postgraduate students are offered the opportunity to get involved in undergraduate teaching and assisting on residential field trips. Dive training is a specific feature of the curriculum at the centre, and postgraduates can train for a nominal fee. Links between CEMS and other institutions such as Central Science Laboratories, Sea Fisheries Committees and Operation Wallacea mean that there are a huge range of topics available.

[www.hull.ac.uk/cems](http://www.hull.ac.uk/cems)

#### Scarborough Management Centre (SMC)

is an integral part of the research community of Hull University Business School, and all research-active staff here belong to a related research group based in Hull.

As well as conducting research across the major areas of business and management, staff at the SMC have developed a focus on supporting local and regional development (for example, local tourism) and an interest in issues of sustainability and regeneration.

As part of a strategy to develop research on local development issues, staff participate in business and government initiatives for the enhancement of the region and support local tourism policies. Every two years academic staff run the Tourism Strategy Forum, helping local authorities and business to agree on the local tourism strategy. Many staff at the SMC are also active in Knowledge Transfer Partnerships.

[www.hull.ac.uk/hubs](http://www.hull.ac.uk/hubs)



**The University has two campuses: one in the leafy suburbs of Hull, just two miles from the city centre; the other in the coastal town of Scarborough. Both are attractive and compact and have an effective blend of traditional and modern architecture.**

## Hull Campus

Academic departments, the library and the students' union, the main focus of campus life, are situated within easy reach of each other. The union is home to more than 70 clubs and societies and has an active entertainments programme. It also contains refectories, bars, games and TV rooms, laundry facilities and a bookshop as well as support and advice services. Hull University Union was recently one of only two in the country to receive a silver award from the Students' Union Evaluation Initiative.

Also at the heart of the campus is the Gulbenkian Centre, which contains one of the best-equipped university theatres in Europe. The University Art Collection has some real treasures, and there are many opportunities for enjoying or making music.

Sport at Hull is taken seriously at every level, from a professionally organised and varied intra-mural programme to more than 40 well-established sporting clubs. The on-campus Sports and Fitness Centre is open seven days a week and has badminton courts, a sports hall, the latest in Technogym equipment, saunas in all changing rooms, and a cafe. Its membership charges are lower than anywhere else in the region. Around the Sports and Fitness Centre are acres of football, rugby, cricket and American football pitches.

## Scarborough Campus

The campus is full of character and easy to find your way around. It overlooks open countryside on the edge of the town, yet is within walking distance of the main shops, amenities, eateries and the beach.

The hub of the students' union entertainment and social activities is Calvino's cafe bar. We also have a dedicated suite of rooms with a range of entertainment facilities, and the union is home to a raft of student societies and sports clubs. All students at Scarborough are full members of the union on the Hull Campus and can access its facilities.

Our students also use the Scarborough Sports and Tennis Centre (five minutes' walk from the campus) and the Scarborough Indoor Swimming Pool complex. These offer tennis and squash courts, a gym and a programme of fitness and martial-arts classes.

There is an orienteering course next to the sports centre, and there are plenty of local walks and cycle trails. Anyone coming to Scarborough should also have a go at one of the watersports on offer: surfing, diving, jet-skiing, rowing or sailing.

## The best of both worlds

Living in Hull or Scarborough has many attractions. You have all the benefits of life in modern urban environments, but with few of the usual stresses and with countryside and coast on your doorstep. What's more, it is considerably less expensive to live in Hull or Scarborough than in other large towns or cities in the UK, northern Europe or the USA.

*Pictured from top: the Hull Campus; the Brynmor Jones Library; the Scarborough Campus (in the foreground).*



**Hull, one of the country's largest cities, and Scarborough, one of its most popular tourist resorts, have much to offer our postgraduate students. And of course they are both situated in a region rich in scenery and heritage.**

### The city of Hull

Hull is a dynamic waterfront city with a strong maritime tradition and a well-deserved reputation for friendliness.

A regional centre for arts, culture and heritage which offers plenty to do and see, it is the perfect place to live and study.

Currently being transformed by over £1 billion of investment, Hull is at an exciting point in its history. In recent years, iconic developments such as The Deep and the Kingston Communications (KC) Stadium have put the city on the national map. Another recent addition, the £165 million St Stephen's development, has brought a new retail centre, transport interchange and apartment complex to the heart of the city centre.

The city's cultural scene is also booming. Live-music venues offer a myriad of choices; Hull Truck Theatre is a must for new and challenging productions; the KC Stadium hosts premier-division sport and sell-out concerts; and the Old Town incorporates the impressive Museums Quarter.

### The town of Scarborough

Offering outstanding natural beauty and its own range of cultural attractions, Scarborough has beaches, bookshops, seafood restaurants, galleries, shopping malls, cinemas and sporting facilities, all set against a picturesque backdrop.

You can dive, fish, jet-ski, row and sail, and Scarborough has some of the best surfing in the country. The town hosts major sporting events including International Bike Week and the Annual Cricket Festival.

Scarborough's renowned Stephen Joseph Theatre showcases innovative, distinctive productions; the annual National Student Drama Festival brings a week of contemporary fringe theatre to the town; the Spa Complex is the setting for the annual Jazz Festival; and the beach is an excellent venue for live music and dance events.

### Within striking distance

The Hull Campus is within easy travelling distance of the open plains, rolling hills and wild, rugged coastline of the East Riding of Yorkshire, while Scarborough is located amid the high cliffs, rocky shores and sandy beaches of the North Yorkshire coastline. The North York Moors National Park, with its varied and beautiful landscapes, is a short journey inland.

The cities of York, Leeds, Manchester, Sheffield and Nottingham are conveniently accessible by rail or road, while the train to London takes less than three hours. Humberside and Leeds/Bradford airports and the port of Hull are also close at hand, offering convenient access to mainland Europe.

*Pictured from top: the Humber Bridge; Scarborough Castle; the Wolds Way. ©Innes.*



**Postgraduate students at the University are well provided for, with specialist equipment, laboratories and study facilities in our departments and research centres. The following University services are also here to support you.**

### Computing services

More than 1,100 open-access computers are available across the Hull Campus for use by students. Included in this provision is the 24-Hour Centre, which is open to students throughout the year. A wireless network service is also available in the Brynmor Jones Library and at various other sites across the campus.

Additionally, the Graduate School provides 60 networked computers reserved exclusively for the use of postgraduate students. The school is also open 24 hours a day.

Students have access to more than 500 applications, including the latest Microsoft Office suite and a wide variety of specialist teaching software. A number of applications are also available for purchase by students at favourable rates. A campus-wide pay-as-you-go printing system is provided and incorporates a specialist colour and transparency service.

Students on the Scarborough Campus have access to more than 100 PCs in the open-access computer suites and to further specialist multimedia workstations in the Keith Donaldson Library. A wide range of software is available for students' use.

The Taylor Court flats in Hull and the halls of residence on both campuses have direct network connections in study-bedrooms, with 24-hour access to the internet and email. Students living in other accommodation are able to use the University's dial-in service.

[www.hull.ac.uk/asc](http://www.hull.ac.uk/asc)

### The library service

There are two main libraries: the Brynmor Jones Library on the Hull Campus and the Keith Donaldson Library on the Scarborough Campus. At Hull there is also a well-stocked Map Library. Students are automatically entitled to use all libraries and their facilities.

- The Brynmor Jones Library, an eight-floor building, holds particularly rich collections of material, including theses, microfilms, videos, music and DVDs, as well as books and periodicals.
- The Map Room has 60,000 sheet maps – the largest collection of its kind in the region.
- The Keith Donaldson Library supports the programmes studied at the Scarborough Campus with some 80,000 volumes and more than 200 current journals.

Together the libraries contain over a million items, subscribe to more than 1,500 print and 17,000 electronic journal titles, and provide access to more than 300 databases and datasets and 2,000 electronic books. All the research specialisms in the University are supported by designated library funds.

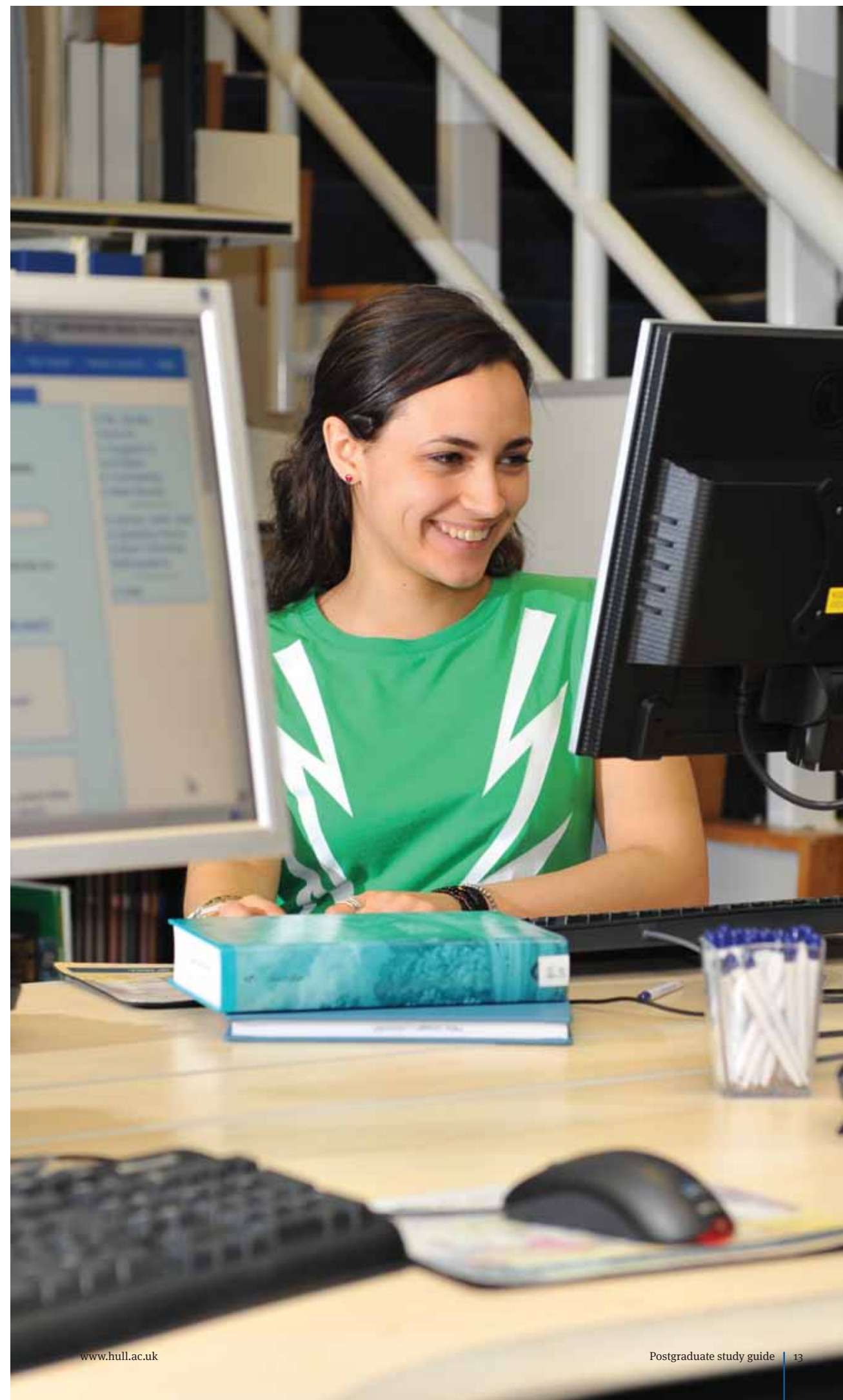
Our web pages – [www.hull.ac.uk/lib](http://www.hull.ac.uk/lib) – give access to the electronic catalogue, databases, e-books and e-journals, and to a wide variety of self-services, including book reservation and renewal.

The libraries have plenty of study spaces (there are more than 1,600 in the Brynmor Jones), networked computer workstations and multimedia equipment.

We run a free minibus service from both campuses to the reading room of the British Library annexe at Boston Spa, where research students can consult extensive holdings of monographs and periodicals.

National recognition of the quality of our customer service comes in the form of the Government's Charter Mark for excellence, which we have received twice.

[www.hull.ac.uk/lib](http://www.hull.ac.uk/lib)



### The Language Institute

The Language Institute, a part of the Department of Modern Languages, is an important resource for postgraduate students who want to improve their skills in a particular language or to learn a new one.

A recent British Academy report (2009) on the future of the UK's world-class research identified knowledge of one or more foreign languages as an essential attribute for graduates. Lack of such knowledge necessarily limits your ability to engage with research topics emanating from non-English-speaking countries.

Our Language Learning Centre is one of the best-equipped in the country and provides an advisory service to support students in their independent study.

You can attend language courses in our suite of dedicated classrooms, or you can undertake self-study with the help of satellite TV from all over the world, state-of-the-art audiovisual facilities and an extensive materials library (10,000-plus items in more than 60 languages).

International students also have access to various preparatory courses in English, some available online.

[www.hull.ac.uk/languages](http://www.hull.ac.uk/languages)

### Postgraduate Society

The Postgraduate Society represents the postgraduate student body within the University. We have an office on the first floor of the students' union where you are free to call in for advice or a chat most afternoons. We organise a regular programme of social activities, including parties, meals, theatre trips and networking events, so there are many excellent opportunities to meet fellow postgraduates across disciplines. The society is organised by a committee of volunteer postgraduate students, who are prepared to commit a couple of hours a week to helping create and maintain a thriving postgrad community. If you would like to join the Postgraduate Committee, please contact us at [pgs@hull.ac.uk](mailto:pgs@hull.ac.uk).

[www.hull.ac.uk/pgs](http://www.hull.ac.uk/pgs)

### Study Advice Service

Providing academic support and skill enhancement for our postgraduates, the Study Advice Service provides e-learning environments, a training programme for Graduate Teaching Assistants and a range of other services. Based in the Brynmor Jones Library, the service offers confidential one-to-one advice, support and guidance on issues such as academic English, study skills, and mathematics and numeracy.

[www.hull.ac.uk/studyadvice](http://www.hull.ac.uk/studyadvice)

### ICT Learning

The ICT Learning team offers training programmes in word processing, SPSS and EndNote, among many other courses in information and communications technology, to ensure that you can fully utilise the computing resources available on campus.

[www.hull.ac.uk/cld](http://www.hull.ac.uk/cld)

### Student welfare

This university assigns a high priority to looking after its students. Academic, social and personal support is embedded within the structures and facilities of the departments, the residences and the students' union. Full details can be found at

[www.hull.ac.uk/studentsupport](http://www.hull.ac.uk/studentsupport)



*The celebrated poet Philip Larkin was the University's librarian for most of his working life.*

### Disabled students

We welcome students with disabilities and have developed systems of support and advice to enable all disabled students to integrate and participate fully in the academic and social life of the University. These systems begin with the admissions process, and we urge all applicants to include information about any disability with their application so that we can take the appropriate action to assess your support needs.

[www.hull.ac.uk/disability](http://www.hull.ac.uk/disability)

### The Graduate School

The Graduate School serves two main purposes. First, it is the main administrative office on the Hull Campus for our research students, supplementing the personal supervision and discipline-specific support that you receive in your department. Second, it provides a number of valuable facilities for all postgraduate students, whether on taught or research programmes.

Our building houses 60 networked workstations, as well as quiet study areas, photocopying facilities, lockers for the storage of personal items, a seminar room, and a common room for social activities. This makes it the perfect place in which to meet other postgraduate students, and we are committed to encouraging a multidisciplinary research culture in the University. All facilities are available 24 hours a day, 365 days a year.

The Graduate School is proactive in representing postgraduate students within the University and in making you feel part of the wider student community. For example, all postgraduates who enter in September are invited to an induction event aimed at familiarising them with the University and its facilities.

The Graduate School also coordinates the University's pioneering Postgraduate Training Scheme, a programme that provides high-quality research and transferable skills training to our research students.

[www.hull.ac.uk/graduateschool](http://www.hull.ac.uk/graduateschool)

### The Careers Service

The Careers Service is available on both campuses to support students at any stage of their study period, providing impartial information, advice and guidance on career-related topics.

Through the use of electronic and paper-based resources and the availability of individual student support sessions, the service aims to meet the needs of students at a time appropriate to them. Students can call into the Careers Centre for help during open-access periods and may request a detailed discussion with an adviser if required.

To further assist students with career planning, the service offers a Career Management Skills module for postgraduate research students.

Students are encouraged to visit the Careers Service website for further information:

[www.hull.ac.uk/careers](http://www.hull.ac.uk/careers)



*Our well-known alumni include Larry Hirst, Chairman of IBM Europe, Middle East and Africa.*

# Accommodation

**We offer a wide choice of residential accommodation in both Hull and Scarborough. Most student accommodation is close to the campuses, which ensures that your travelling costs are kept to a minimum.**

At our Hull Campus we provide a range of self-catering residential accommodation for our postgraduate students, mostly in the on-campus Taylor Court flats and in student houses. In addition, University-managed private-sector housing is located in the surrounding streets. All of this accommodation features single rooms with separate common rooms, kitchens and communal facilities. Of course, some students prefer to make their own arrangements to live in private-sector accommodation, which is neither difficult to find nor expensive (visit [www.the-scheme.com](http://www.the-scheme.com)).

Student accommodation in Scarborough is also reasonably priced and of a very high standard. There are two options: University-owned and -managed accommodation and a huge range of private flats and rooms. Cayley Hall is on campus, and the rooms are single, en suite and arranged in blocks of up to a dozen around shared kitchens. Privately owned rooms and flats are available for our students outside the main holiday periods.

Appropriate accommodation for students who intend to bring their families here is harder to find, and you are advised to start looking as soon as possible. If you intend to bring your family, you should look for private accommodation.

There may be opportunities to take up resident tutorships at the University's halls of residence. These offer involvement in pastoral work, and a package of benefits is provided.

Contact our Accommodation Office to find out more. They produce an annual accommodation guide which includes full details of your options and the application process. Please visit

[www.hull.ac.uk/accomm](http://www.hull.ac.uk/accomm)



*Pictured from top: Taylor Court; student houses the Hull Campus; Cayley Hall on the Scarborough Campus.*



Another prominent Hull alumnus is Lord Hattersley, the former Deputy Leader of the Labour Party.

Postgraduate study at the University of Hull covers the traditional higher degrees at Masters (MA, MSc, MPhil, MBA) and PhD levels as well as professional doctorates, degrees and diplomas and a variety of advanced professional training.

Like other UK universities, we distinguish between taught programmes, which are delivered to classes of students on a fixed timescale, and research degrees, which are based on individual work under the direction of academic supervisors. However, many taught programmes include an individual research project, and all postgraduate degrees at Hull involve gaining credits in research training.

Most full-time Masters programmes last from September to the following August; MPhil and some MSc degrees require a minimum of two years' full-time research; and research for a PhD normally involves at least three years' full-time study (or five part-time).

### MRes programmes

The University also offers Master of Research (MRes) degrees. These act both as preparation for PhD and as self-contained opportunities for valuable training and research. They are suitable for those who do not wish to take a higher research degree but want to enhance their knowledge and skills for employment.

### Postgraduate pamphlets

Details of postgraduate opportunities at the University are published in a range of pamphlets covering different subject areas:

- Arts and Humanities
- The Business School (MSc Programmes and Hull MBA)\*
- Education
- Health and Social Care
- The Law School
- PGCE
- Politics and Social Sciences
- Science

\* The Business School also offers research (MRes and MPhil/PhD) opportunities – see page 25.

### For copies, please contact

Student Recruitment Directorate  
University of Hull  
Hull, HU6 7RX  
T 0870 126 2000  
E [inforequests@hull.ac.uk](mailto:inforequests@hull.ac.uk)

All publications listed are available online at [www.hull.ac.uk/pgdocs](http://www.hull.ac.uk/pgdocs).

The University of Hull is a pioneer in the development of training programmes for research students. We also have a good reputation for the levels of supervision that we offer.

### Training

Our one-year taught Masters degrees, MRes degrees and taught/professional doctorates contain specific research-training elements that students must complete.

Training for students on traditional research Masters or PhD programmes – that is, research degrees assessed purely by a thesis – is more broadly based and is administered under the Postgraduate Training Scheme (PGTS). This scheme is accredited by the University and has been developed to help you do two things:

- undertake research more effectively
- gain transferable skills which can be used in your future career

The exact course of training that you undertake will depend on your specific needs as identified by you and your supervisor.

Part-time students and those generally working away from the University's campuses are not exempt from the requirement to undertake research training. Week-long Easter and Summer Schools and other opportunities are offered to help them meet this requirement.

Through the PGTS you can achieve a Certificate (60 credits) or a Diploma (120 credits) in Postgraduate Research Training. Each is a formal qualification in its own right and will add significantly to your CV. The skills and experience that you gain from the training will not only facilitate your research but also enhance your standing in many areas of employment.

### Supervision

Personal supervision of your programme of research is provided by staff who are experts in their fields. Our research students are allocated either two joint supervisors or a supervisory panel, with a named individual as main supervisor. This system ensures quality and continuity of support. It also promotes the concentration of expertise in small groups of staff and postgraduates who work closely together.

*On the following pages you will find a brief introduction to each of the academic faculties, schools and institutes within which our postgraduates pursue their study and research. Full details of postgraduate opportunities within these areas can be found in the subject pamphlets that we publish alongside this booklet.*

## The Faculty of Arts and Social Sciences

The Faculty of Arts and Social Sciences is at the heart of the University of Hull's research culture. It has been recognised as internationally excellent in most areas of its research output, most recently by the Research Assessment Exercise 2008.

Research is carried out both within traditional departmental structures and, increasingly, in interdisciplinary research centres and institutes which bring together areas of established and emerging strength, often in stimulating new configurations.

Our research institutes include the Wilberforce Institute for the study of Slavery and Emancipation (WISE) and the Institute for Applied Ethics.

WISE has a headquarters off campus, in Hull's historic Old Town. It occupies Oriol Chambers, an 18th-century merchant's house located next door to the birthplace of William Wilberforce, MP for the city and the man responsible for the bill which abolished the transatlantic slave trade. WISE plays host to researchers in a variety of disciplines, including law, history, anthropology, literary and cultural studies, sociology and modern languages, who share interests in historical and contemporary slavery, social justice and human rights. It is situated close to Hull's History Centre, which houses civic, University and private archives.

The Institute for Applied Ethics, based at the Hull Campus, draws together researchers from philosophy, political science, law, business, criminology and biomedical sciences. It has strengths in political and military ethics, in biomedical ethics and law and in criminal justice, especially restorative justice.

Both institutes have attracted funding from Research Councils UK and from a variety of other sources. Colleagues from this faculty are also involved in a new Centre for Adaptive Science, in association with other researchers across the University and more widely with the White Rose group of universities in Yorkshire.

Our research centres include the Philip Larkin Centre for Poetry and Creative Writing, which hosts a large number of cultural events each year on the Hull Campus and in the city. The Andrew Marvell Centre – named after another famous Hull MP who was also (like Larkin) a major poet – is an interdisciplinary home for researchers working on the medieval and early modern periods, including colleagues from Drama, English, History, Modern Languages and Music. The Centre for Spirituality Studies provides a forum for researchers from Social Work, Theology, Education and subjects allied to Medicine. The Centre for Popular Cultures brings together colleagues from Computer Science, Drama, English, Film Studies, History, Modern Languages, Media Studies, Music and Sociology.

There are many other research centres and groupings, some within distinct disciplinary areas and some which cross disciplinary boundaries.

The faculty has been successful in attracting external funding, especially in recent years, building on its record of excellence. This opens up possibilities for intending researchers.

The Faculty of Arts and Social Sciences is driven by its engagement with research. To discover more about our strengths and opportunities for your research development, visit

[www.hull.ac.uk/fass](http://www.hull.ac.uk/fass)





## The Faculty of Health and Social Care

The Faculty of Health and Social Care offers a range of postgraduate programmes which are designed to meet the professional and personal developmental needs of health and social care staff. Whether you enrol for a single module (as part of our Professional Development Qualification Scheme), a Postgraduate Certificate, a Postgraduate Diploma or a full Masters degree, our aim is to provide a learning experience which is stimulating, challenging and above all relevant to your professional needs in the modern workplace.

Postgraduate students enter a rich learning environment in which a wide range of learning and teaching approaches are employed – including the use of eBridge, our virtual learning environment. Students' professional knowledge is always valued, and they are active participants in learning. Our programmes are run by staff with leading-edge professional and theoretical knowledge. Most of our postgraduate programmes can be taken on a full-time or part-time basis. Most applicants have a good first degree, but we also welcome applications from non-graduates with appropriate professional experience or an appropriate portfolio of accredited learning.

The MSc Health Professional Studies is attractive to students seeking a broad postgraduate education. You develop skills in critical thinking and research and explore issues drawn from your own workplace. Optional modules enable you to tailor your learning to your individual interests, whether in leadership and management, research, or some other aspect of study.

The MSc Leadership in Health and Social Care informs and enhances students' roles as leaders within health and social care organisations. The programme focuses on your personal and professional development as a leader, in the context of a critical understanding of contemporary leadership theory. It is particularly attractive to students involved in the modernisation of services.

The MSc Colonoscopy is a specialist course on which students from a variety of professional backgrounds develop the skills, knowledge and attitudes to explore and critically evaluate theoretical and practical aspects of colonoscopic practice.

We also offer a range of Postgraduate Certificates, which are awarded on successful completion of programmes containing three postgraduate modules (60 credits). They are

- PGCert Knowledge Transfer – a unique programme which explores knowledge transfer in the public sector
- PGCert Practitioner Research – which develops students' skills in reviewing the literature and applying research to practice
- PGCert Practice Teacher – primarily designed for community nurses with specialist or advanced qualifications (SPQ, SCPHN or ANP) who wish to become Practice Teachers, but equally available to health care professionals in advanced roles with a remit for teaching, learning and assessing in the workplace
- PGCert Community Nursing – one of our routes to registration as a Specialist Community Nurse or Specialist Community Public Health Nurse

The strategic health authority supports the post-registration education required by a variety of service providers, which is identified through its commissioning groups, partnership meetings and workforce-planning arrangements. These programmes are free at the point of delivery to students who work within the North and East Yorkshire and Northern Lincolnshire regions in the NHS / primary care trusts, the Ambulance Service, NHS Direct, hospices or the Prison Service, supported by their NHS and social care managers. All students who are eligible to study at postgraduate level may access the portfolio through flexible fee-paying methods.

[www.hull.ac.uk/fhsc](http://www.hull.ac.uk/fhsc)

## The Institute for Learning

The Institute for Learning ([www.hull.ac.uk/ifl](http://www.hull.ac.uk/ifl)) consists of two specialist areas:

- The Centre for Educational Studies – [www.hull.ac.uk/ces](http://www.hull.ac.uk/ces)
- The Centre for Lifelong Learning – [www.hull.ac.uk/cli](http://www.hull.ac.uk/cli)

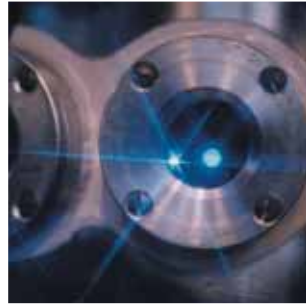
The institute is internationally recognised for the research-based nature of its learning and teaching and has a particular interest in serving the educational needs of the region. Staff are involved in a number of research themes, including policy and leadership; learning for all; pedagogy; food, health and education; inclusion; the curriculum; the learning process; and technologies. The institute is also engaged in a range of research activities with local communities and various national and international organisations. There is a vibrant research seminar series open to students, which involves staff and guest speakers. In addition, students are welcome to attend staff workshops for building research capacity.

As well as initial teacher training (for primary, secondary and further education teachers), the institute provides a range of learning opportunities at all levels – from University Foundation Awards, Foundation degrees and Bachelors degrees through to Masters (taught or research) and doctoral programmes. There are courses for new and experienced schoolteachers and other education workers, many of which involve training and research in the wider community.

Postgraduate programmes are chiefly the concern of the Centre for Educational Studies. The Centre for Lifelong Learning offers a range of short courses (which you may take alongside your degree programme) that provide you with personal and professional development opportunities.

The Institute for Learning works closely with the Scarborough School of Education ([www.hull.ac.uk/sse](http://www.hull.ac.uk/sse)) to offer a selection of postgraduate programmes in education.





## The Faculty of Science

The Faculty of Science has a vibrant community of active research departments, comprising

- Biological Sciences – [www.hull.ac.uk/biosci](http://www.hull.ac.uk/biosci)
- Chemistry – [www.hull.ac.uk/chemistry](http://www.hull.ac.uk/chemistry)
- Computer Science – [www.hull.ac.uk/compsci](http://www.hull.ac.uk/compsci)
- Engineering – [www.hull.ac.uk/engineering](http://www.hull.ac.uk/engineering)
- Geography – [www.hull.ac.uk/geog](http://www.hull.ac.uk/geog)
- Physics – [www.hull.ac.uk/physics](http://www.hull.ac.uk/physics)
- Psychology – [www.hull.ac.uk/psychology](http://www.hull.ac.uk/psychology)
- Sport, Health and Exercise Science – [www.hull.ac.uk/sportscience](http://www.hull.ac.uk/sportscience)

We also have a number of interdisciplinary research institutes and centres, which specialise in particular areas.

The 2008 Research Assessment Exercise confirmed the strength of our research, world-class excellence being identified in biology, chemistry, geography, psychology and the allied health areas. There is also internationally excellent research in engineering and sport science.

We provide outstanding research facilities and have recently invested over £9 million in state-of-the-art laboratories, technology and equipment to ensure that science research remains at the forefront of the University's activities. In the period 2009–11 we are investing a further £6 million in continuing this process of upgrading and enhancing our facilities.

Many of our taught Masters programmes are developed in collaboration with industry and government organisations, and much of our research is industry-sponsored. Past and current collaborators include BAE Systems, Microsoft, Reckitt Benckiser, Unilever, GlaxoSmithKline, GEC, Toshiba, QinetiQ, DERA, the NHS and English Heritage. Many of our sponsors also provide funding for full research PhD scholarships. Details can be found on the departmental websites above.

Our science departments consistently score highly in the National Student Survey for the quality of student experience that they provide. On a practical basis, postgraduate students are allocated a personal supervisor who is an expert in their field of study, and each department has a dedicated tutor responsible for postgraduate students. Your success as a student is our success too, so we take particular care in monitoring your progress to make sure that you are appropriately supported throughout your studies and that you receive the supervision and facilities needed in order to complete your Masters degree or PhD successfully.

Most taught Masters programmes offer dedicated work/study spaces and laboratories, while PhD students become part of a specialist research group which enjoys its own facilities.

Scholarship opportunities exist for UK, EU and international students. Your chosen department will be able to advise you as to whether they have any current MSc and PhD scholarship opportunities.

In addition, the faculty runs a Science Scholarship for international students, which offers £2,000 towards the cost of tuition fees for taught Masters programmes. Details can be found at

[www.hull.ac.uk/international](http://www.hull.ac.uk/international)

For further general information about the faculty, go to

[www.hull.ac.uk/science](http://www.hull.ac.uk/science)

## The Business School

With specialist Masters programmes, the flagship Hull MBA, and research programmes to doctoral level, Hull University Business School offers a wealth of opportunities to pursue postgraduate study and research, all designed to enhance your professional or academic career.

Recognition from two of the leading global accreditation systems for business schools (AMBA and EQUIS) has confirmed our status as a leading UK school. The award of EQUIS from the European Foundation for Management Development further highlights our strong corporate and international connections. The Quality Assurance Agency has acknowledged the excellence of our teaching and learning, and in the 2008 Research Assessment Exercise 85% of research returned by the school was classed as of an international standard, with over half that judged to be internationally excellent or world-leading.

Intended for recent or fairly recent graduates, our taught MSc programmes equip students for career development by providing subject-specific expertise, transferable personal and professional skills, and interaction with business and business professionals. We currently offer MSc programmes in business management; economics and business; financial management; human resource management; international business; logistics and supply chain management; advertising and marketing; marketing management; money, banking and finance; and transport management and economics.

The Hull MBA is an internationally accredited business degree, offering education at an advanced level to graduates with at least three years' managerial experience. It enhances strategic capabilities, pragmatic business skills and an awareness of the complex, interdependent nature of the business world. Accredited by AMBA (the Association of MBAs), this programme provides access to career development opportunities long after graduation. The flexible delivery of this degree means that the Hull MBA can be taken by part- or full-time study in Hull or part-time in one of four overseas locations.

Our research programmes – the MRes and the MPhil/PhD – can support students with research interests in any of the six areas of excellence which make up our internationally active research community: economic policy; international accounting and finance; logistics; management and organisational learning; marketing, communications and international strategy; and systems studies. The high quality of our doctoral training programme has received recognition from the Economic and Social Research Council.

The school is based in four inspiring listed buildings which have been sympathetically renovated to allow the seamless integration of first-class modern facilities, including dedicated computer suites, a 500-seat lecture theatre and a management learning laboratory.

The state-of-the-art Logistics Institute is an excellent facility, with students throughout the school further benefiting from the resources and expertise of this prestigious development.

The Business School is also pleased to offer a wide range of scholarships and bursaries to support postgraduate students. For more information please visit the school's website at

[www.hull.ac.uk/hubs](http://www.hull.ac.uk/hubs)



## The Postgraduate Medical Institute

The Postgraduate Medical Institute (PGMI), much of which is sited off the main campus, undertakes the majority of the University's health-related research. Its core objective is to establish academic departments across a broad range of medical disciplines, within which the staff pursue research, conduct teaching and care for patients, in conjunction with NHS colleagues.

The PGMI has established Departments of Medicine, Surgery, Obstetrics and Gynaecology, Psychiatry, Oncology and Clinical Psychology, along with a Centre for Magnetic Resonance Investigations (MRI) and an Institute of Rehabilitation and Therapies. Further growth is envisaged on account of the institute's close association with, and direct involvement in the establishment of, the Hull York Medical School.

The PGMI's research programme focuses on key areas in which the institute has proven expertise. These include cancer, cardiovascular disease, magnetic resonance imaging and clinical psychology. Much of the research is internationally recognised, particularly in the areas of heart failure, solid tumour and MRI-related cancer research.

The institute actively promotes collaborative work with NHS consultants and junior staff, general practitioners and health administrators.

The Medical Research Laboratory, on the University's Hull Campus, can be used by any of the departments interested in laboratory-based medical research. Our facilities also include the Research Development Building (Daisy Building) on the Castle Hill Hospital site.

The PGMI's high-profile research encourages the pursuit of excellence at all levels in the delivery of health care to people in the Yorkshire and Humber region.

[www.hull.ac.uk/pgmi](http://www.hull.ac.uk/pgmi)

## The Hull York Medical School

The Hull York Medical School (HYMS) is an innovative medical school, established by the Universities of Hull and York in partnership with the NHS.

The school capitalises on Hull's considerable strengths in clinical medicine and York's background in bioscience and health-related research in areas such as clinical trials, epidemiology and health economics.

HYMS students therefore benefit from the best of both worlds in terms of academic and clinical facilities, while the Humber and North Yorkshire region receives substantial clinical benefits from having a world-class medical school on its doorstep.

HYMS represents one of the largest developments in the history of the University of Hull. Established in response to a local and national need for more doctors, part of its vision is to make a significant difference to health care in the region, including areas where social deprivation, excess mortality and a high morbidity rate are genuine problems.

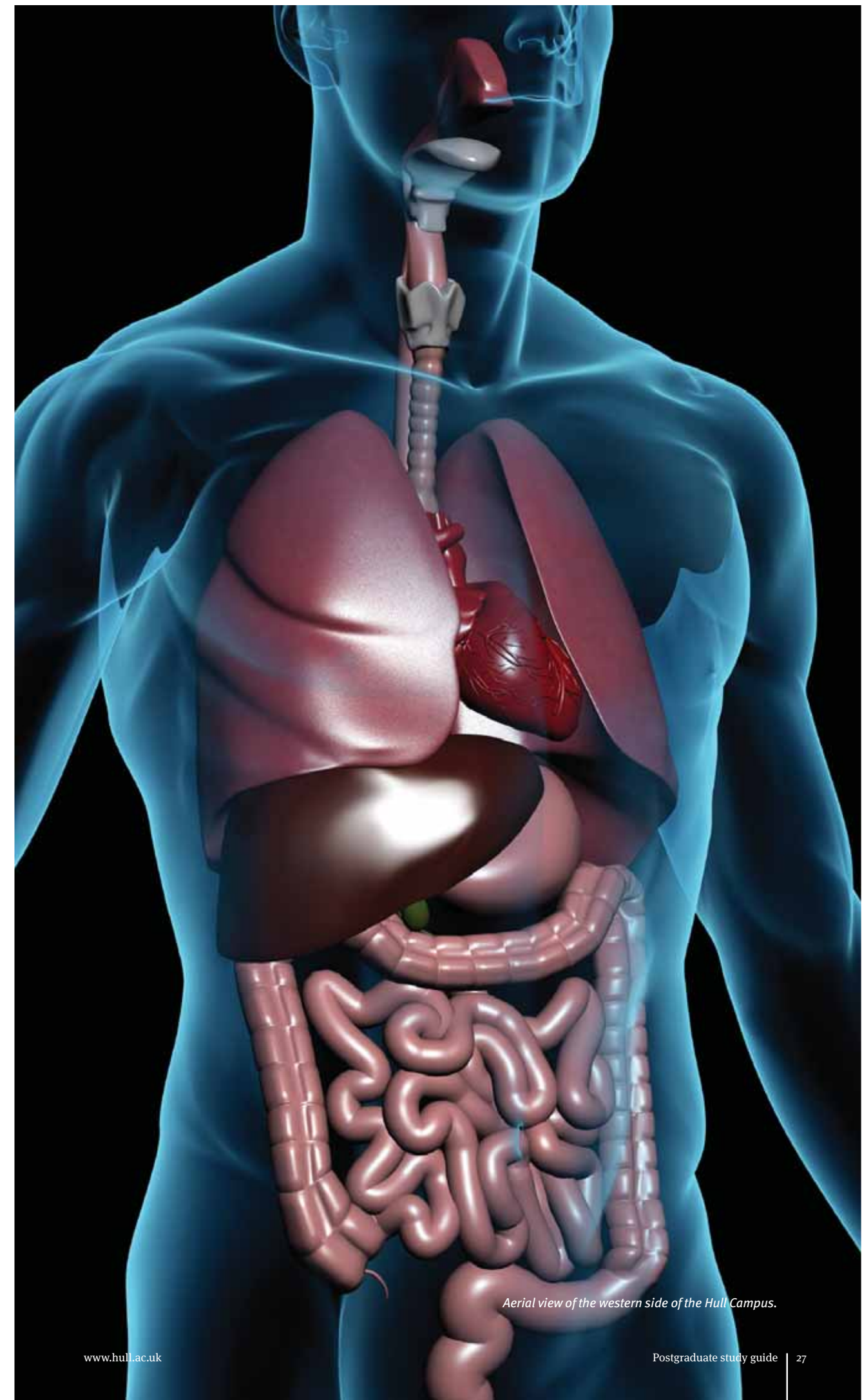
The HYMS undergraduate curriculum combines innovative learning styles and a solid grounding in the sciences with regular clinical experience and has been designed specifically to meet the fast-changing challenges of 21st-century health care while making full use of the most innovative recent developments in best educational practice.

Modern teaching methods such as problem-based learning, a virtual learning environment, patient contact from Week 2 of the course and clinical placements throughout the programme, all set in a fully integrated curriculum, have put HYMS at the cutting edge of medical education.

HYMS has approximately 650 medical students at any one time, and each graduate is awarded a joint degree from the Universities of Hull and York.

As well as offering a top-quality undergraduate school, HYMS has developed and now offers postgraduate programmes and is establishing internationally recognised research. Many students are also encouraged to study for an extra year towards an intercalated degree (BSc Hons), before completing the MBBS. Further information can be obtained by calling 0870 120 2323 or logging on to

[www.hyms.ac.uk](http://www.hyms.ac.uk)



*Aerial view of the western side of the Hull Campus.*



*Hull Economics graduate Muhtar Kent is now President and Chief Operating Officer of Coca-Cola.*

This is a distinctively cosmopolitan university which offers a distinctively warm welcome to students from overseas.

**The International Office**

The University is a vibrant international community with over 3,000 international students from 128 countries. The International Office supports all recruitment and student exchange activity, delivers the International Welcome for new arrivals and provides on-campus immigration advice and guidance. Its staff are from several countries and speak more than 10 languages collectively.

Our aim is to enhance the experience of international students at the University. Be assured that you will receive all the help you need – from the moment you first contact the University to the day you graduate – on a wide range of issues, including visa renewal. The International Office runs a programme of talks, tours and social activities as part of the International Welcome to help you learn more about student life and about living in the UK. There is a free transport service for all new students who arrive on one of the Arrival Days (see [www.hull.ac.uk/international](http://www.hull.ac.uk/international) for details).

Remember: if you need a visa to study in the UK, you should allow sufficient time for it to be processed – sometimes four months or more.

There have been recent changes in the way the UK Border Agency manages the visa application process for international students. The University has a Tier 4 Grade A licence and is recognised by the UK Border Agency for the purposes of inviting students to study in the UK. More information about the recent changes can be found at [www.ukba.homeoffice.gov.uk/studyingintheuk](http://www.ukba.homeoffice.gov.uk/studyingintheuk) (if you are in the UK) or at [www.ukvisas.gov.uk](http://www.ukvisas.gov.uk) (if you are outside the UK).

[www.hull.ac.uk/international](http://www.hull.ac.uk/international)

**Accommodation**

All unaccompanied international postgraduate students are guaranteed a place in accommodation owned, managed or directed by the University throughout their period of full-time registration.

[www.hull.ac.uk/accomm](http://www.hull.ac.uk/accomm)

**English language ability**

If your first language is not English, you will be required to provide recent evidence of English language ability, such as a TOEFL or IELTS score or some other recent academic qualification studied and assessed in English throughout. Check out the full list of recognised English language qualifications on the Admissions website:

[www.hull.ac.uk/admissions](http://www.hull.ac.uk/admissions)

While the normal minimum is IELTS 6.0 (with all four skills at least 5.0), some departments have additional requirements beyond this (the Law School and the MBA programme, for example, require IELTS 6.5 or equivalent). A GMAT test is not required.

**English language provision in the Department of Modern Languages**

Our Bridge Programme provides intensive tuition if you need an extended course of training in English before starting your studies. It runs from September to June but is divided into two twelve-week stages. There is also a Summer Study Programme (from May to September) offering four-, eight-, twelve- or sixteen-week courses to help prepare you for university-level study.

Assessment on the Bridge Programme and the final Summer Study module is accepted as an alternative to an IELTS test if a sufficient level is achieved.

[www.hull.ac.uk/languages](http://www.hull.ac.uk/languages)

**Masters Foundation programme**

A preparatory course is available for some students who do not meet the normal academic entry criteria (see pages 34–5).

**Study in your home country**

You may be able to register for a part-time PhD in your own country, but only after the academic department is satisfied that all necessary support is available locally, that arrangements can be made for regular contact with your Hull supervisor and that you can fulfil our postgraduate training requirements.

See pages 37–9 for programmes available via the internet.

**Funding**

All offers to study at the University of Hull are subject to your securing funding to cover tuition fees and living costs. The University offers several postgraduate scholarships and bursaries for international students. Contact the International Office for full details. We also recommend that you read the booklet *Studying in the UK: Sources of Funding for International Students*, published by UKCISA. And you should contact your home government for information on any scholarships that may be available. Remember – secure your funding as soon as possible.

[www.hull.ac.uk/international](http://www.hull.ac.uk/international)

[www.ukcisa.org.uk](http://www.ukcisa.org.uk)

**Further information**

The International Office produces regularly updated information which may be of interest to you: for example, a *Travel Guide* and a *Cost of Living* booklet. If you would like to receive any of these publications, please go to

[www.hull.ac.uk/international/resources](http://www.hull.ac.uk/international/resources)

where they can be downloaded at appropriate times of the year. Alternatively, contact us at

International Office  
University of Hull  
Hull, HU6 7RX, UK  
[international@hull.ac.uk](mailto:international@hull.ac.uk)

**Personal expenditure**

This will vary greatly between students, depending on income, interests, culture, programme of study and distance from home. Below are examples of how students might spend their money in an academic year.

Books, stationery, photocopying, equipment	£400–600
Telephone and postage	£200–300
Food	£1,250
Laundry	£100
Non-food items (e.g. warm clothes)	£150
Bedding	£35
Local travel (within the UK)	£180
Entertainment	£840

**Example of total costs**

Below is an example of what a postgraduate arts student from overseas might spend during 20010/11 while living in Taylor Court on a 50-week contract.

Accommodation	£4,441.50
Food (£25 x 50 weeks)	£1,250
Journals, books and stationery	£400
Telephone and postage	£225
Clothing	£150
Local travel	£180
Entertainment (50 weeks)	£750
Combined living expenses	£7,396.50
Tuition fee	£9,500.00
<b>Total</b>	<b>£16,896.50</b>

## The cost of living

The cost of living in Hull and Scarborough is lower than almost anywhere in Britain (indeed, some 30–40% less than in London) and significantly lower than in comparable university cities in northern Europe or the north-eastern and western US. Moreover, the location of our campuses and residences means that daily travelling costs are low (or non-existent), and that good, cheap shopping for food, clothes and other everyday items is within easy walking distance.

## Tuition fees

The standard annual tuition fees for the 2010/11 session are quoted below.

### Full-time degree, diploma and certificate programmes

Except for our 'non-standard' programmes (see page 31), 2010/11 fees are

	Home & EU	Overseas
Arts	£3,440*	£9,800
Science	£3,440*	£11,900
PGCE	£3,290	£9,800

\* The fee rate has been aligned to the anticipated 2010/11 fee rate for full-time postgraduate students sponsored by research councils. This fee rate will be confirmed in April 2010.

### Part-time degree, diploma and certificate programmes

Except for our 'non-standard' programmes (see page 31), 2010/11 fees are

	Home & EU	Overseas
Arts	£1,720	£4,900
Science	£1,720	£5,950
PGCE	£785	n/a

## Modular-based fees

Where fees are charged for flexible learning on a modular basis, except for our 'non-standard' programmes (see page 31) the fee for a 20-credit module (of a 180-credit programme) in 2010/11 will be

	Home & EU	Overseas
Arts	£380	£1,090
Science	£380	£1,320

## Notes

- The Council of the University reserves the right to revise fees at any time. Each student's fee status is determined on receipt of a full application for admission.
- International students may be admitted to part-time study only in particular circumstances.
- All students are required to pay at least 50% of the fees on registration or provide written confirmation of sponsorship.
- A discount of 2% (for payments made by cash, debit account, bank transfer, cheque or banker's draft but not credit card) is offered to students paying the total session fee at registration. Alternatively, you may pay in three instalments – see [www.hull.ac.uk/handbook](http://www.hull.ac.uk/handbook) for details.
- A student sponsored by a commercial organisation, government body, funding council, university, public utility, etc, will not be permitted to register unless written confirmation by the sponsor is produced at least six weeks before registration. Should the sponsor subsequently fail to make payment, the University reserves the right to transfer the debt to the student, and payment regulations for self-financing students will apply.
- Self-financing students will not be permitted to register until a tuition fee payment has been made and any prior debt to the University, for either tuition fees or accommodation charge, is cleared.

## Programmes attracting non-standard fees

A number of programmes attract fees at rates different from those specified above. The following list is not exhaustive. These figures are approximate guides and will be finalised in early 2010. Programmes are full-time unless otherwise indicated.

### Faculty of Arts and Social Sciences

	Home & EU	Overseas
LLM in European Public Law (Dual LLM for which additional fees are payable to Washington, DC, Law School)	£2,485	£6,975
PGCert in Advising for Language Learning (part-time)	£460 per module	
PGCert/Dip Legislative Studies (part-time)	£1,250	£3,120

### The Business School

Please see [www.hull.ac.uk/money](http://www.hull.ac.uk/money) for information on fees (and on scholarships and bursaries).

### Faculty of Science

	All students
PGCert in REACH Management	£4,400

### Postgraduate Medical Institute

	Home & EU	Overseas
ClinPsyD	£19,903	£21,420
PGDip in Cognitive Behavioural Therapy	£8,466	N/A

### Institute for Learning

	Home & EU	Overseas
MBA in Educational Leadership	£2,245–2,485	£4,700–4,935

Please note that the fee for some IfL programmes is based on the modules taken. For full details contact the institute.

### Faculty of Health and Social Care

Programmes offered by the FHSC have various non-standard fee levels. Contact [fhsc.admiss@hull.ac.uk](mailto:fhsc.admiss@hull.ac.uk) for information.

### Other programmes

There is an application fee for the PGCE (for which applications are made via the Graduate Teacher Training Registry scheme) and MA Social Work (applications via [www.ucas.ac.uk](http://www.ucas.ac.uk)).

See page 35 for the Masters Foundation programme fee.



*Jenni Murray, OBE, newspaper columnist and presenter of Radio 4's Woman's Hour, graduated with a degree in French and Drama from Hull.*

**There is no single deadline for applications. We ask that your application reaches the University by 1 September (for a September start) or otherwise at least a month before your intended start date. Programme directors need time to ensure that places are offered only to those well qualified to achieve the high standards required for a UK postgraduate degree, so we recommend early enquiries (any necessary visa application may also take three to four months in some countries). Guidance on writing a research proposal for a research Masters or PhD degree is given on the Graduate School's website at [www.hull.ac.uk/graduateschool](http://www.hull.ac.uk/graduateschool).**

## Application form

Our postgraduate application form may be downloaded from [www.hull.ac.uk/admissions](http://www.hull.ac.uk/admissions). You can also apply online from [www.prospects.ac.uk](http://www.prospects.ac.uk). For PGCE apply via [www.gtr.ac.uk](http://www.gtr.ac.uk); for MA Social Work via [www.ucas.ac.uk](http://www.ucas.ac.uk). Applications for the PGCert in Medical Education are made via [www.hyms.ac.uk](http://www.hyms.ac.uk).

## Programme duration

Most full-time Masters programmes last from September to the following August. MPhil and some MSc degrees normally require a minimum of two years' full-time research, and a PhD at least three years' full-time study (or five part-time).

## Start date

The academic year is divided into two semesters. Most taught programmes start only at the beginning of Semester 1 in mid September. Some courses that are distance-taught on location or through the internet can be started at other times. Research students can start at the beginning of any month with the prior agreement of their department. Masters Foundation students will start in mid June.

## When will I study?

Most full-time programmes require you to be at the University through both semesters and across most of the summer period (to research and complete your dissertation). Part-time programmes are scheduled according to the location and demand. Please contact the relevant department for information.

## MPhil/PhD registration

Applicants are not required to hold a Masters degree, but it is normal for intending PhD students to be registered initially for the MPhil and to transfer to PhD registration when they have demonstrated research of sufficient quality. We strongly advise intending PhD applicants to outline their proposed doctoral research at the outset.

## Research proposals

Applicants for research programmes are asked to give supporting information. You might, for example, be asked for an indication (in 1,000 to 5,000 words) of your approach to your proposed subject. The proposal will not finally determine the title or scope of your thesis – by definition, research may lead you in quite unexpected directions – but it does ensure that we can match you with an expert supervisor, and it helps ensure that you do not run the risk of wasting precious time 'making a start' when you register.

## References

We also ask for references from two people who can comment on your academic ability, achievements and previous experience; in some cases this might be an employer. The University may later choose to contact these referees.

## Recognition of qualifications

The University normally looks for a good standard of UK Bachelors degree at the Honours level (at least second class – though applicants with lower scores can be considered for Masters Foundation entry – see pages 34–5), or an equivalent standard in a non-UK post-school-leaving qualification of at least three years' duration and

awarded by a recognised higher education institute. In some cases, equivalent professional qualifications are equally acceptable. HND and similar diplomas are not normally acceptable. Additional requirements are essential for some programmes. For guidance on equivalence of qualifications contact the Admissions Service, or visit [www.naric.org.uk](http://www.naric.org.uk) for independent advice.

## Fee status assessment

The University assesses fee status when we receive your full application. We may ask for more information to make an informed assessment decision. The University reserves the right to review fee status if further information subsequently comes to light, before or after registration. Advice on fee status regulations is available at [www.ukcisa.org.uk](http://www.ukcisa.org.uk).

## Additional information

The University reserves the right at any stage to request applicants or registered students to provide further information in relation to their application or registration. If such information is not provided within the period specified, we reserve the right to refuse to consider the application, cease registration, rescind home fee status and/or demand payment of any fees owing.

## Placements / periods abroad

For programmes that could include a period of study abroad or on work placement it is the applicant's responsibility to ensure, prior to admission, that they will be able to secure any necessary work permits or visa to allow their full involvement.

## Medical information

For some programmes leading to professional training, applicants are required to provide information about their medical history and satisfy vaccination requirements – you would be contacted if that information were required.

## Equal opportunities

The University operates an Equal Opportunities Code of Practice for the Admission of Students which is available via [www.hull.ac.uk/admissions](http://www.hull.ac.uk/admissions).

## Independent Safeguarding Authority (ISA)

From November 2010, entrants to programmes involving regular contact with children or vulnerable adults may be required to be registered with the ISA ([www.isa-gov.org.uk](http://www.isa-gov.org.uk)). The University will advise where applicable.

## Criminal convictions

Applicants to programmes which lead to professional training exempted under the Rehabilitation of Offenders Act 1974 will be asked about any criminal convictions prior to a pre-admission clearance check. This is in addition to the question on the postgraduate application form. Anyone who responds positively will be asked for further information on receipt of their application.

## Visiting students

Students can apply to register for individual modules, not necessarily leading to an award. For more information contact the Admissions Service (or, in the case of those overseas, the International Office).

## Distance learning and teaching

The Business School and the Institute for Learning offer some part-time Masters programmes that are taught on location, in specified countries only, by visiting academic staff. The Institute for Learning offers some professional programmes for senior teachers in some UK locations. For more information, visit our website or call 01482 463254 (Business School enquiries) or 01482 466872 (Institute for Learning enquiries).

A few programmes are now available for online learning – see pages 37–9.

## The application process

You send a completed application form to the Admissions Service

The Admissions Service makes initial checks and passes the form to the appropriate academic department(s)

If appropriate, a formal offer is sent to you by the Admissions Service

You are asked both to reply and to satisfy any conditions for entry

Registration and payment of fees, usually at the start of the academic session in September



*Another Hull alumnus is the popular poet and broadcaster Roger McGough, who studied French and Geography.*

# Masters Foundation programme

The University of Hull is pleased to offer a Masters Foundation programme for entry to Masters degrees in the areas of education, law, business, politics and social sciences.

## The Masters Foundation programme

is a comprehensive higher education study-skills preparatory course to top up academic qualifications in the chosen subject area and enhance study skills.

You will be registered on a full-time 15-month programme of study from June to the September of the following year (e.g. June 2011 to September 2012), and there is guaranteed progression to a Masters degree on successful completion.

## English language

The Masters Foundation programme is not a course in English language. Pre-sessional language courses for students who do not meet the English language entry requirements are available throughout the year. For detailed information, see

[www.hull.ac.uk/languages](http://www.hull.ac.uk/languages)

An English language course can be taken before the Masters Foundation phase, extending the duration of your studies beyond 15 months.

## Accommodation

University-managed accommodation is guaranteed for the duration of your studies. The University has various types of residence available for lone students and can help students with families to find suitable accommodation in the private sector. For more details, view

[www.hull.ac.uk/accomm](http://www.hull.ac.uk/accomm)

Guaranteed progression to	
MEd Education	MA Slavery Studies
MSc Business Management	MA European History
MSc Financial Management	MA Early Modern History
MSc Human Resource Management	MA Medieval History
MSc International Business	MA Military History
MSc Logistics and Supply Chain Management	MA German History
MSc Marketing Management	MA Imperial History
MSc Advertising and Marketing	MA Women's History
MSc(Econ) Economics and Business	MA Local and Regional History and Archaeology
MSc(Econ) Money, Banking and Finance	MA Translation Studies
MSc(Econ) Transport Management and Economics	MA TESOL
MA European Union Governance	MA TESOL with Translation Studies
MA Global Political Economy	MA Translation Studies with TESOL
MA Globalisation and Governance	MA Philosophy of Mind and Body
MA International Law and Politics	MA Theology
MA International Politics	MA Spirituality Studies
MA Legislative Studies (online)	MSc Applied Social Research
MA Strategy and International Security	MA Diversity, Culture and Identity
LLM International Law	MMus Music
LLM International Business Law	MA Gender and Development
LLM International Human Rights Law	
LLM Human Rights and Criminology	
LLM European Public Law	
MA International Law and Politics	

## Cost

The tuition fee (2010 start) for the Masters Foundation programme is £1,050 for home/EU students and £2,100 for international students. This fee does not cover the cost of any Masters degree to which you might progress.

## Entry requirements

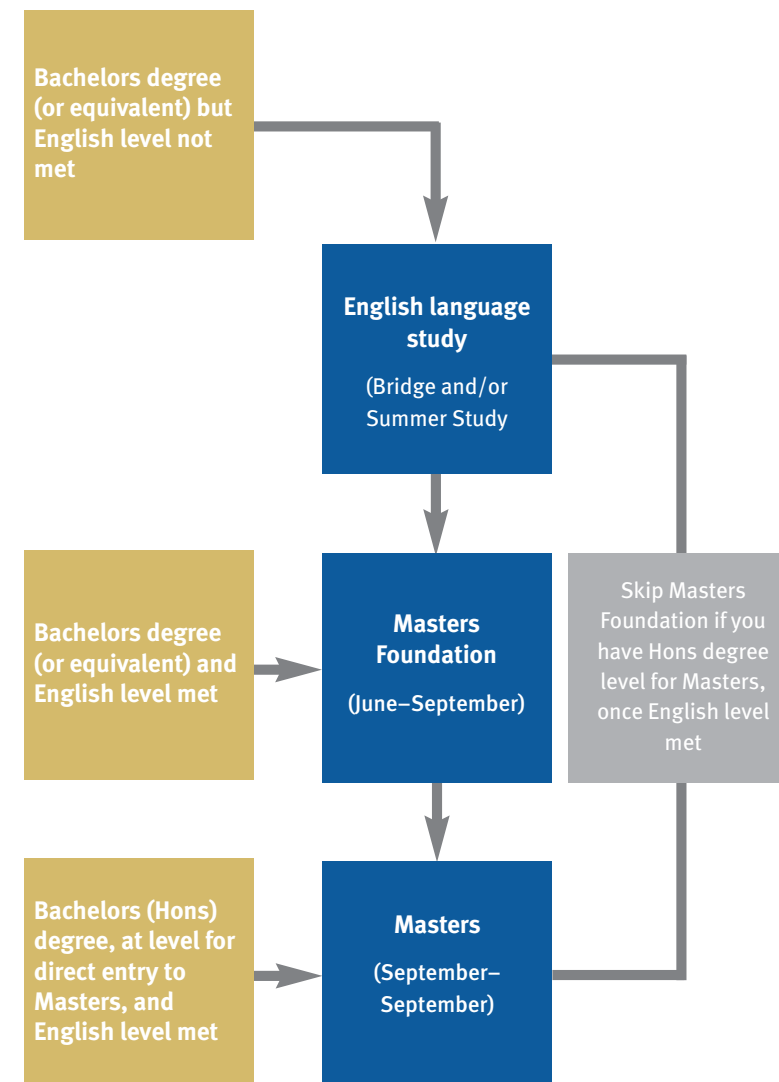
Candidates should have at least a Bachelors degree or equivalent. They should also have an English language minimum of 6.0 IELTS (or equivalent) before starting the Masters Foundation programme. A higher level of English is required for the LLM (6.5 IELTS), the MBA (6.5 IELTS) and the MA Translation Studies (7.0 IELTS).

## The application process

The postgraduate application form can be downloaded from

[www.hull.ac.uk/admissions](http://www.hull.ac.uk/admissions)

Application is made for the full 15-month programme – please specify your intended Masters degree on your application.





A collaboration between the University and Hull City Council, the Hull History Centre brings together material previously held by the University and city archives. Its collections include the Philip Larkin archives and those of the human rights pressure group Liberty.

Full-time on-campus taught programmes begin in late September and require a full calendar year of study. You qualify for a Postgraduate Diploma by successfully completing the 'taught' elements of the programme (usually across the session's two semesters, which conclude in early June). For the Masters degree you then progress to the dissertation or project phase of the programme. More information on all programmes is available through academic department web pages at [www.hull.ac.uk](http://www.hull.ac.uk). Please check the website for up-to-date listings.

Programmes are taught at the Hull Campus, unless labelled as 'Scarborough' or 'online'.

*	Research Masters programme	STA	Subject to approval
FT	Full-time only	†	Apply via GTTR
F/PT	Full- or part-time	‡	Apply via UCAS
PT	Part-time only	HYMS	Apply via <a href="http://www.hyms.ac.uk">www.hyms.ac.uk</a>

#### Arts and humanities

Creative Music Technology (Scarborough)	MRes*	F/PT
Creative Writing	MA	F/PT
Digital Media (Scarborough)	MSc	FT
Diversity, Culture and Identity	MA	F/PT
Early Modern History	MA	F/PT
English by Research	MA	F/PT
English: Identities (Scarborough)	MRes/MA*	F/PT
English Literature	MA	F/PT
European History	MA	FT
German History	MA	F/PT
Global History (STA)	MA	FT
Historical Studies	MA*	F/PT
History of Political Discourse (1500–1800)	MA	F/PT
Imperial History	MA	F/PT
Local and Regional History and Archaeology	MA	F/PT
Medieval to Early Modern Culture	MA	F/PT
Medieval History	MA	F/PT
Medieval Vernacular Language and Literature	MRes/MA*	F/PT
Military History	MA	F/PT
Modern and Contemporary Literature	MA	F/PT
Music	MMus	FT
Nineteenth-Century Studies	MA	F/PT
Performance Practice	MA	FT
Philosophy of Mind and Body	MA*	F/PT
Popular Cultures	MA	F/PT
Slavery Studies	MA	F/PT
Sonic Art (Scarborough)	MRes*	F/PT
Spirituality Studies	MA	F/PT
Theology	MA	F/PT
Women, Gender and Literature	MA	F/PT
Women's History	MA	FT

#### Biological sciences

Biomedical Science	MSc	FT
Molecular Medicine	MSc	FT

#### Business School

Advertising and Marketing	MSc	FT
Business and Management	MRes*	FT
Business Management	MSc	FT
Economics	MRes*	FT
Economics and Business	MSc(Econ)	FT
Executive MBA	MBA	PT

Financial Management	MSc	FT
The Hull MBA	MBA	FT
Human Resource Management	MSc	FT
International Business	MSc	FT
Logistics and Supply Chain Management	MSc	FT
Marketing Management	MSc	FT
Money, Banking and Finance	MSc(Econ)	FT
Transport Management and Economics	MSc(Econ)	FT

### Chemistry and physics

Analytical and Forensic Chemistry	MSc	FT
Chemistry	MSc	FT
Chemistry with Biotechnology	MSc	FT
Chemistry with Nanotechnology	MSc	FT
Physics	MSc	FT
REACH Management	PGCert	PT

### Computing

Computer Graphics Programming	MSc	F/PT
Computer Science	MSc	FT
Games Programming	MSc	FT
Internet Computing (Scarborough)	MSc	F/PT
.NET Distributed Systems Development	MSc	FT
.NET Financial Systems Development	MSc	FT
Website Design and Development	MSc	FT

### Education

Early Childhood Education and Care (EYPS)	PGCert	FT
Early Childhood Studies	MEd	F/PT
Education (Jan/Sept start possible)	MEd	F/PT
Education Studies	MA	PT
Educational Policy and Values (semi-taught)	EdD	F/PT
e-Learning (online)	MEd	PT
Inclusive Education	MEd	F/PT
Initial Teacher Training – Primary, 3–8 years (Scarborough)†	PGCE	FT
Initial Teacher Training – Primary, 5–11 years†	PGCE	FT
Initial Teacher Training – Secondary†	PGCE	FT
Leadership and Learning	MEd	F/PT
Masters in Teaching and Learning	MTL	PT
Mentoring in Education	MEd	PT
Music, Technology and Education (Scarborough)	MEd	PT
Sustained Professional Development	AdvCert	PT

### Engineering

Automatic Control	MSc	FT
Electronic Engineering	MSc	FT
Embedded Systems	MSc	FT
Medical Engineering	MSc	FT
Wireless Systems	MSc	FT
Wireless Systems and Logistics Technology	MSc	FT

### Geography and the environment

Environmental Technology	MSc	F/PT
Environmental Technology (Renewable Energy)	MSc	F/PT
GIS and Environmental Modelling	MSc	F/PT
Human Geography	MRes*	FT
Physical Geography	MRes*	FT

### Medicine, health and social care

Ageing and Diversity (online)	MSc	PT
Cognitive Behavioural Therapy	PGDip	FT
Clinical Psychology	ClinPsyD	FT

Colonoscopy	MSc	PT
Health Professional Studies	MSc	PT
Health and Social Care	MRes*	F/PT
Medical Education (HYMS)	PGCert	PT
Practice Teaching	PGCert	PT
Surgery (Colorectal)	MSc	F/PT
Surgery (Nutritional Support in Hospital Patients)	MSc	F/PT
Surgery (Science, Research and Education)	MSc	F/PT

### Languages

Advising for Language Learning (online)	Cert	PT
Language Learning and Technology (online)	MA	F/PT
Modern Languages	MRes*	F/PT
TESOL	MA	F/PT
TESOL with Translation Studies	MA	F/PT
Translation Studies	MA	F/PT
Translation Studies with TESOL	MA	F/PT

### Law

Dual LLM (part studied at Washington College of Law)	LLM	F/PT
European Public Law	LLM	F/PT
Human Rights and Criminology	LLM	F/PT
International Business Law	LLM	F/PT
International Human Rights Law	LLM	F/PT
International Law	LLM	F/PT
Restorative Justice	MA	F/PT

### Politics and international relations

Civilisation, Terrorism and Dissent	MA	FT
European Union Governance	MA	F/PT
Global Communication and International Politics	MA	F/PT
Globalisation and Governance	MA	F/PT
Global Political Economy	MA	F/PT
International Law and Politics	MA	F/PT
International Politics	MA	F/PT
International Studies and Security (online)	MA	PT
Legislative Studies (online)	Cert/Dip/MA	PT
Strategy and International Security	MA	F/PT

### Psychology

Research Methods in Psychology	MRes*	FT
--------------------------------	-------	----

### Social sciences

Applied Social Research	MSc/Dip	F/PT
Criminology	MA	F/PT
Criminology and Human Rights	MA	F/PT
Development Studies	MA	F/PT
Gender and Development	MA	F/PT
Gender Research	MSc	F/PT
Gender Studies	MA	F/PT

### Social work

Social Work ‡	MA	FT
---------------	----	----

### Sport, health and exercise science

Sport, Health and Exercise Science	MSc	FT
------------------------------------	-----	----

Last updated March 2010

**Ongoing investment**

The University continually upgrades and invests in its facilities. Recent additions include a medical engineering laboratory (£1.2 million); the Hull Immersive Visualization Environment, which houses some of the UK's best 3D visualization facilities (£1 million); and a sport, health and exercise science laboratory incorporating equipment unrivalled in the north of England (£1.3 million). Investment in science research laboratories in 2009–11 includes £6 million worth of new and upgraded facilities and equipment.

**High-quality research**

The 2008 Research Assessment Exercise, conducted by the Higher Education Funding Council for England, reported that 80% of research submitted by the University was 'of international standard' in terms of originality, significance and rigour.

**State-of-the-art Business School**

The £8.7 million redevelopment of the Business School has enhanced the learning experience and reinforced the University's international and industrial connections.

**Centre of excellence in logistics**

From new £9 million premises – incorporating technology development labs, technology showcase units and business incubation units – the Logistics Institute combines the University's strengths in business logistics and communications technologies, helping to establish the region as a centre of excellence in port logistics and supply chain management.

**Relevance to business**

The new £2 million Enterprise Centre houses the Business and Community Knowledge Exchange, which uses academic expertise to benefit businesses around the region – bringing a commercial and community relevance to research across the University.

**Unique expertise on slavery**

The Wilberforce Institute for the study of Slavery and Emancipation (WISE) is an international, multidisciplinary research centre unique in this country. Its patron is Archbishop Emeritus Desmond Tutu.

**High-tech partnerships**

The University establishes and maintains unique partnerships. A collaboration with Microsoft produced the .NET MSc programme (the first of its kind worldwide), and Sun Microsystems selected the University as a centre of excellence in their Digital Campus project.

**A pioneering Medical School**

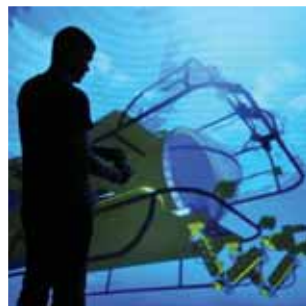
In partnership with the NHS, Hull York Medical School delivers a distinctive medical curriculum, providing a pioneering, patient-centred approach to the training of tomorrow's doctors. Its first cohort graduated in summer 2008.

**Exceptional historical resources**

A ground-breaking collaboration between the University and Hull City Council, the Hull History Centre is a new purpose-built facility which brings together material previously held by the city archives, the local studies library and the University archives. Its collections include the Philip Larkin archives and those of the human-rights pressure group Liberty.

**Leading-edge programmes**

The University's MSc in Games Programming was the first degree of its kind in the country to receive accreditation from Skillset, the Sector Skills Council for Creative Media, which ensures that creative media industries in the UK maintain their world-class position.



**Our other postgraduate brochures are ...**

- Arts and Humanities
- The Business School (MSc Programmes and Hull MBA)\*
- Education
- Health and Social Care
- The Law School
- PGCE
- Politics and Social Sciences
- Science

\* The Business School also offers research (MRes and MPhil/PhD) opportunities – see page 25.

*In the national Research Assessment Exercise of 2008, 80% of the University of Hull's research was judged to be of international standard in terms of originality, significance and rigour. This is one reason why we have more than 2,300 postgraduate students from some 50 countries worldwide.*